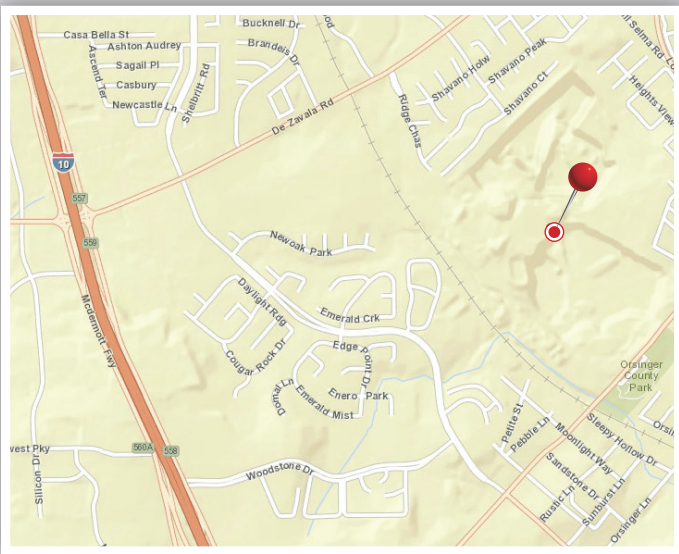
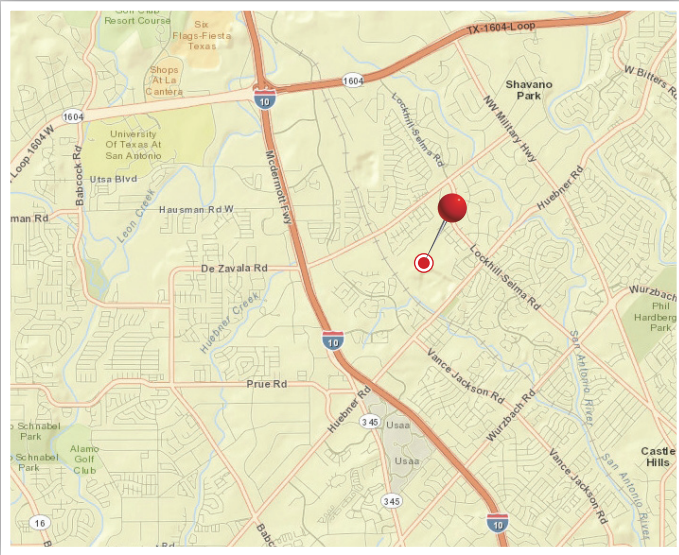


# HUEBNER ROAD

12307 Huebner Road · San Antonio, TX 78230  
 Rail Served - Rail connected to Union Pacific



**VULCAN TRANSLOADING**



Let Vulcan Transloading keep your business moving. Vulcan Materials offers industrial real estate properties connected to major transportation corridors and modes of delivery. These properties capitalize on the use of high volume movements of products using railroads, deep water ports, major waterways and interstate highways.

Vulcan has nearly 80 real estate properties for industrial or commercial use. These properties are located in or near major metro areas including Houston, Chicago, New Orleans, Norfolk, Mobile and San Antonio. Businesses that would benefit from a partnership with Vulcan include property brokers and agents, industrial bulk product suppliers, agricultural industry suppliers, container transloading operations, third party logistics companies, and construction materials suppliers.

Vulcan's rail properties leverage major rail carriers including the Burlington Northern Santa Fe Railroad (BNSF), Norfolk Southern Railroad (NS), Union Pacific Railroad (UP), CSX Railroad, CN Railroad, and several short line railroads. Vulcan also offers access to the U.S. Gulf Coast and the Mississippi and Ohio waterways with locations having deep water ports and barge capabilities.

Vulcan has also assisted energy product vendors in Texas by providing them with real estate, transloading and processing space adjacent to the major shale plays in the state.

**Other facilities connected to rail, barge and ship are located in:**

<b>Rail</b>	<b>Barge</b>	<b>Ship</b>
Alabama	Alabama	Alabama
California	Florida	Florida
Florida	Illinois	Louisiana
Illinois	Kentucky	Texas
Kentucky	Louisiana	
Louisiana	Mississippi	
Mississippi	North Carolina	
North Carolina	Tennessee	
Oklahoma	Texas	
Pennsylvania	Virginia	
South Carolina		
Tennessee		
Texas		
Virginia		

Scan with your mobile device to view more facilities.



Contact us for additional location information!  
[www.vulcantransloading.com](http://www.vulcantransloading.com)

- Rail Served - Rail connected to Union Pacific
- Rail Track Type: Ladder
- 4,200 Feet of track
- Unloading Method: Car Topping
- 100 Rail car capacity
- Close to the San Antonio metro area
- Access to I10
- Ideal for loading/unloading bulk dry materials

For more information please visit  
[www.vulcantransloading.com](http://www.vulcantransloading.com)

