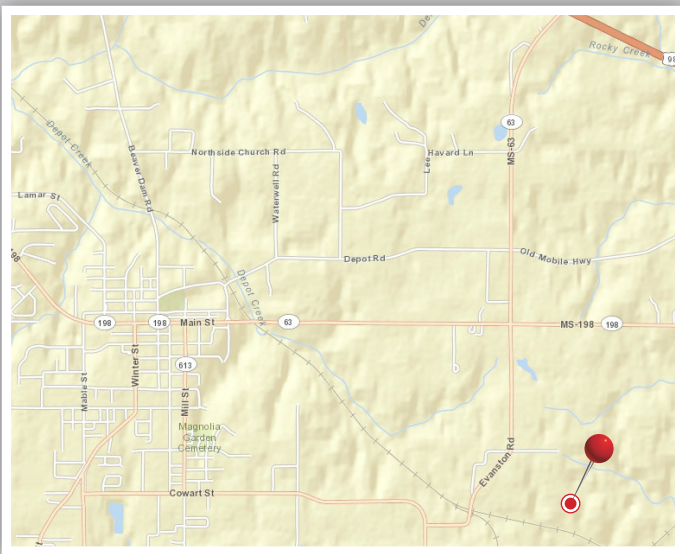
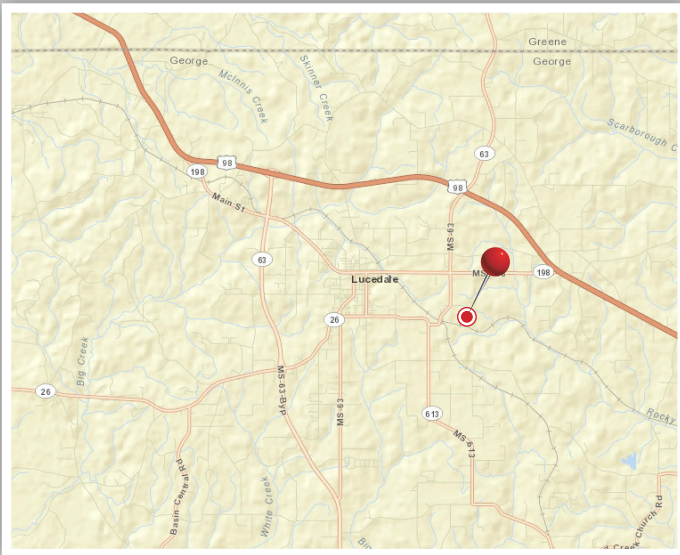


LUCEDALE

201 County Industrial Park Road · Lucedale, MS 39452
Rail Served - Rail connected to ME



Let Vulcan Keep Your Business Moving



Vulcan Materials offers industrial real estate properties connected to major transportation corridors and modes of delivery. These properties capitalize on the use of high volume movements of products using railroads, deep water ports, major waterways and interstate highways.

Vulcan is currently offering 50+ real estate properties for industrial or commercial use. These properties are located in or near major metro areas including Houston, Chicago, New Orleans, Norfolk, Mobile and San Antonio. Ideal business that would benefit from a partnership with Vulcan include property brokers and agents, industrial bulk product suppliers, agricultural industry suppliers, container transloading, third party logistics companies, and construction materials suppliers.

Vulcan's rail properties leverage major rail carriers including the Burlington Northern Santa Fe Railroad (BNSF), Norfolk Southern Railroad (NS), Union Pacific Railroad (UP), CSX Railroad, CN Railroad, and several short line railroads. Vulcan also offers access to the U.S. Gulf Coast and the Mississippi and Ohio waterways with locations having deep water ports and barge capabilities.

Vulcan has assisted energy product vendors in Texas by providing them with real estate, transloading and processing space adjacent to the major shale plays in the state. Contact us today so that we can help you get your business moving.

Other facilities connected to rail, barge and ship are located in:

Rail	Barge	Ship
Alabama	Alabama	Alabama
California	Florida	Florida
Florida	Illinois	Louisiana
Georgia	Louisiana	Texas
Illinois	Mississippi	
Pennsylvania	North Carolina	
Texas	Tennessee	
Virginia	Texas	
	Virginia	

Scan with your mobile device to view more facilities.



- 3,000 Feet of track
- Rail Track Type: Ladder
- Unloading Method: Pit
- 50 Rail car capacity
- 13 acres available for transloading
- Close to Mobile metro area
- 35 Miles to Mobile, AL
- Ideal for loading/unloading bulk dry materials

Please contact: Bobby Shill
(205) 298-3742

Contact us for additional location information!
KeepYourBusinessMoving@vmcmail.com
www.vulcanmaterials.com/KeepYourBusinessMoving

